



Caraway Apartments, SE1  
£565,000, Leasehold

Anderson//Rose



## Caraway Apartments, SE1

This apartment is larger than the average one bed, it has a practical layout with a separate kitchen, good storage and a living room that accommodates a dining area as well as a comfortable lounge. Built in the style of the old warehouses that surround Cayenne Court, the living room has "loading bay" doors that open inwards with a Juliet balcony.

All windows face west from the fifth floor position. Cayenne Court provides 24 hour concierge, a well-equipped gym and a swimming pool.

Shad Thames is a wonderful place to live. It is a tranquil neighbourhood on the banks of the Thames next to Tower Bridge and yet it is an easy walk to the City of London. It has long been known

for its great restaurants and there are now even more to choose from.

**WATCH THE VIDEO!**

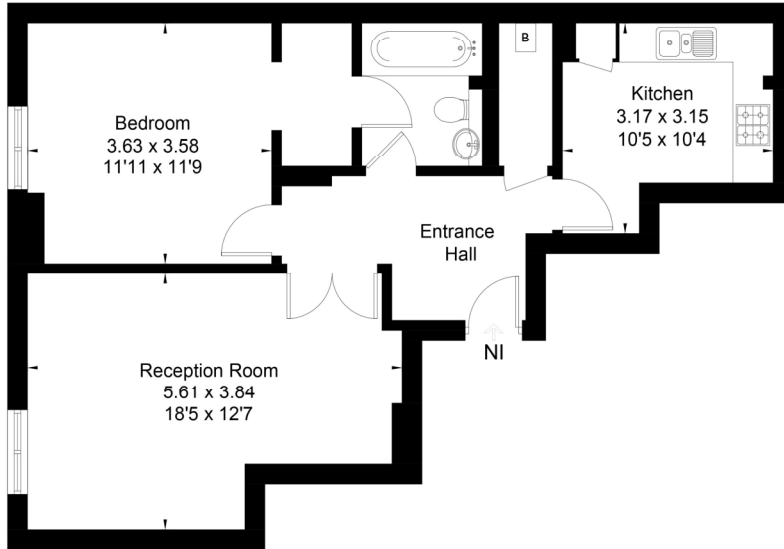
*OVER 600 SQUARE FEET  
SEPARATE KITCHEN  
WEST FACING  
LIFT  
24 HOUR CONCIERGE  
GYM  
POOL*

*WATCH THE VIDEO!, Ref  
TOW220003*

**£565,000**  
**Leasehold**

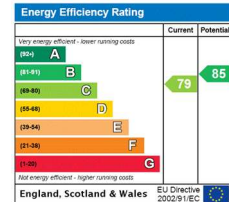


Approximate Floor Area = 58.7 sq m / 632 sq ft



Fifth Floor

Drawn for illustration and identification purposes only by fourwalls-group.com 291756



For clarification, we wish to inform prospective purchasers that we have prepared these sales particulars as a general guide. We have not carried out a detailed survey, nor tested the services, appliances and specific fittings. Room sizes are approximate and rounded: they are taken between internal wall surfaces and therefore include cupboards/shelves, etc. Accordingly, they should not be relied upon for carpets and furnishings. Formal notice is also given that all fixtures and fittings, carpeting, curtains/blinds and kitchen equipment, whether fitted or not, are deemed removable by the vendor unless specifically itemised within these particulars.

020 3324 0188

[towerbridge@andersonrose.co.uk](mailto:towerbridge@andersonrose.co.uk)

[www.andersonrose.co.uk](http://www.andersonrose.co.uk)

Anderson//Rose